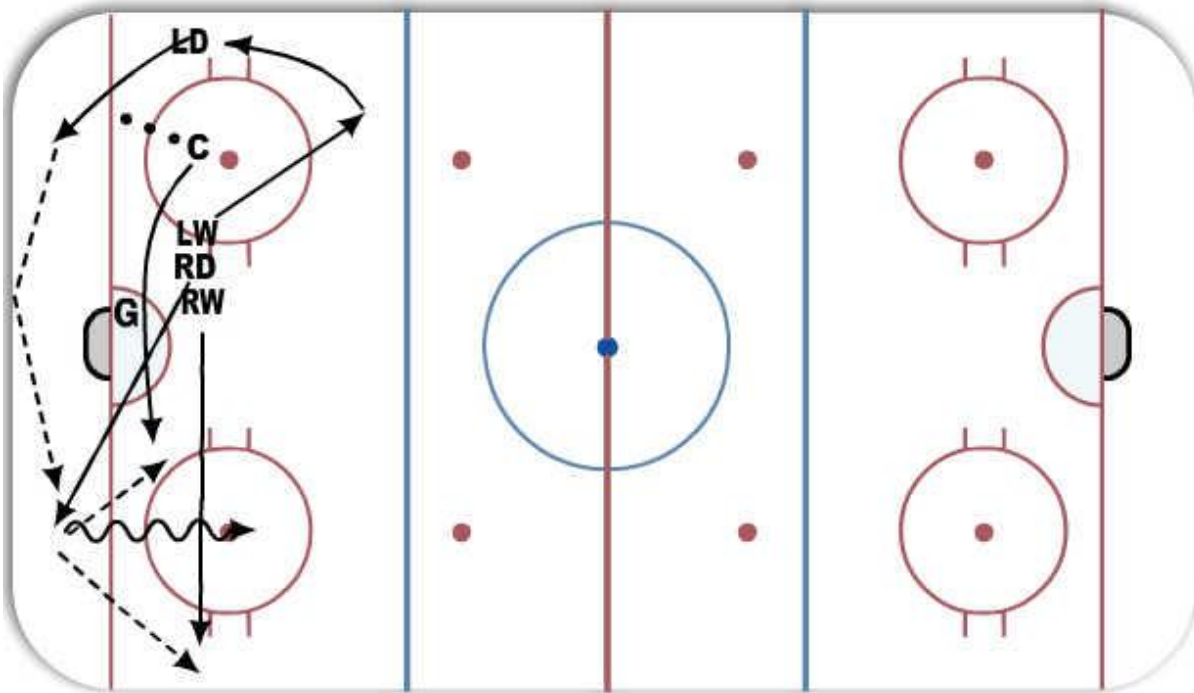


Defensive Zone Faceoff - COPY



Description

Centre's ensures Alignment is proper before getting into set position. Each player knows their assignment.

Centreman to win draw to corner and tie up opposite teams centre from going through. If the draw is won cleanly he stays low and supports either Dman. LW to get out to point and read where puck is going. RW to react to proper role (offense or defense positioning). LD to quickly get to puck and look at options. RD to react and become outlet for LD. LD makes direct or bank pass to RD. RD has three options; 1 - carry the puck up ice, 2 - pass to Centre coming across to support, 3 - pass to RW.

Key Points: Faceoff AAA's - Alignment, Assignment, Attitude

Notes

Attitude - Cman and all players have attitude to win every draw. Cman must ensure everyone is ready and aligned, especially goalie. He must focus on puck in referee's hand.

Alignment - Every player must ensure they are properly aligned before puck is dropped.

Assignment - All must understand their role and responsibilities if draw is won or lost. All players need to know game situation i.e. last 30 seconds, short handed, power play etc.